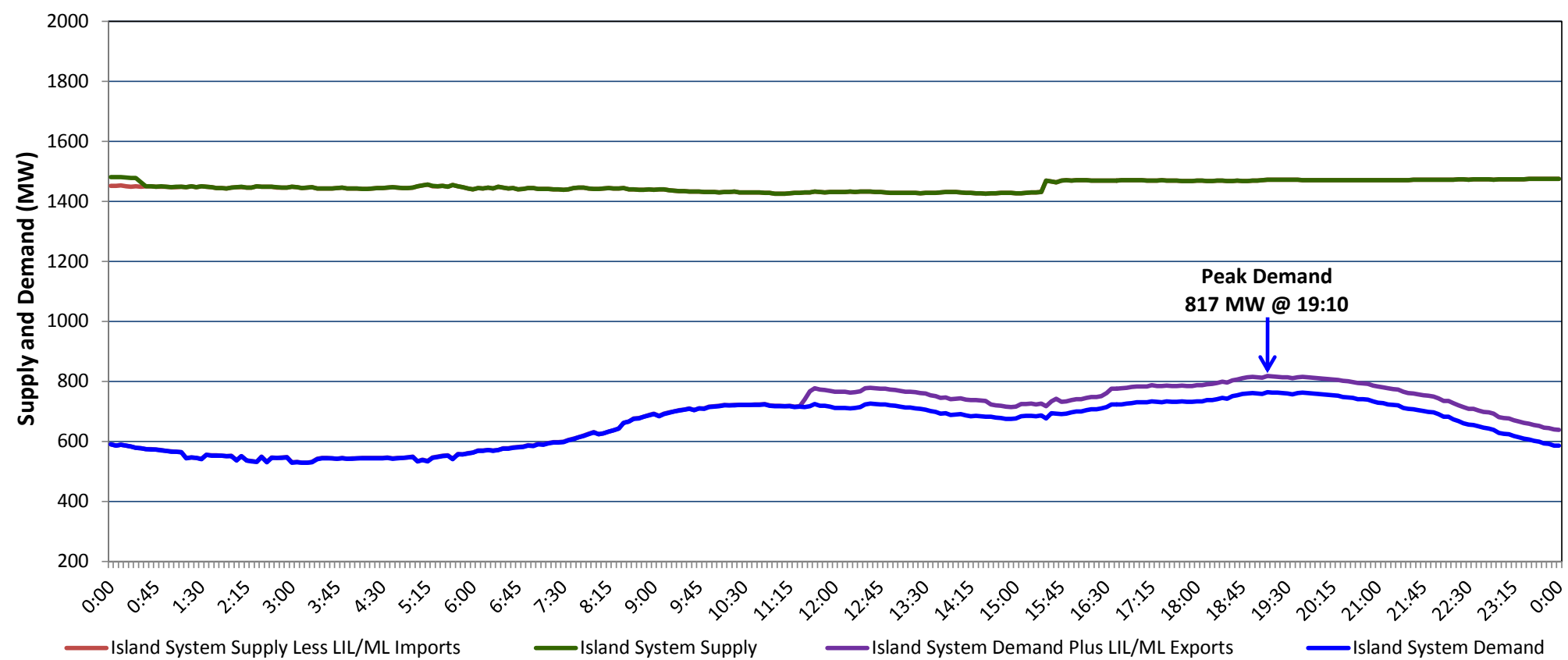


**Newfoundland Labrador Hydro (NLH)
Supply and Demand Status Report Filed Monday, October 19, 2020**

**Section 1
Island Interconnected System Supply, Demand & Exports
Actual 24 Hour System Performance For Sunday, October 18, 2020**



Supply Notes For October 18, 2020

- 1,2
- A As of 0853 hours, June 21, 2020, Holyrood Unit 3 available but not operating (150 MW).
 - B As of 0734 hours, September 27, 2020, Hinds Lake Unit unavailable due to planned outage (75 MW).
 - C As of 0648 hours, October 05, 2020, Bay d'Espoir Unit 3 unavailable due to planned outage (76.5 MW).
 - D As of 0850 hours, October 16, 2020, Bay d'Espoir Unit 4 unavailable due to planned outage (76.5 MW).
 - E As of 1830 hours, October 16, 2020, Holyrood Unit 2 available but not operating (170 MW).
 - F At 1530 hours, October 18, 2020, Holyrood Unit 1 available at full capacity (170 MW).

**Section 2
Island Interconnected Supply and Demand**

Mon, Oct 19, 2020	Island System Outlook ³	Seven-Day Forecast	Temperature (°C)		Island System Daily Peak Demand (MW)	
			Morning	Evening	Forecast	Adjusted ⁷
Available Island System Supply: ⁵	1,480 MW	Monday, October 19, 2020	10	9	865	865
NLH Island Generation: ⁴	1,145 MW	Tuesday, October 20, 2020	10	12	800	800
NLH Island Power Purchases: ⁶	105 MW	Wednesday, October 21, 2020	15	8	850	850
Other Island Generation:	230 MW	Thursday, October 22, 2020	13	14	850	850
ML/LIL Imports:	- MW	Friday, October 23, 2020	6	4	940	940
Current St. John's Temperature & Windchill:	10 °C	Saturday, October 24, 2020	7	9	890	890
7-Day Island Peak Demand Forecast:	940 MW	Sunday, October 25, 2020	11	8	910	910

Supply Notes For October 19, 2020

- 3
- Notes:
1. Generation outages for running and corrective maintenance are included. These are not unusual for power system operations. They generally do not impact customer supply. The power system operators schedule outages to system equipment whenever possible to coincide with periods when customer demands are low and sufficient supply reserves are available. However, from time to time equipment outages are necessary and reserves may be impacted.
 2. Due to the Island system having no synchronous connections to the larger North American grid, when there is a sudden loss of large generating units there may be a requirement for some customer's load to be interrupted for short periods to bring generation output equal to customer demand. This automatic action of power system protection, referred to as under frequency load shedding (UFLS), is necessary to ensure the integrity and reliability of system equipment. Under frequency events have typically occurred 5 to 8 times per year on the Island Interconnected System and the resultant customer load interruptions are generally less than 30 minutes. With the activation of the Maritime Link frequency controller during the winter of 2018, UFLS events have occurred less frequently.
 3. As of 0800 Hours.
 4. Gross output including station service at Holyrood (24.5 MW) and improved NLH hydraulic output due to water levels (35 MW).
 5. Gross output from all Island sources (including Note 4).
 6. NLH Island Power Purchases include: CBPP Co-Gen, Nalcor Exploits, Rattle Brook, Star Lake, Wind Generation and capacity assistance (when applicable).
 7. Adjusted for curtailable load, market activities and the impact of voltage reduction when applicable.

**Section 3
Island Peak Demand Information
Previous Day Actual Peak and Current Day Forecast Peak**

Sun, Oct 18, 2020	Actual Island Peak Demand ⁸	19:10	817 MW
Mon, Oct 19, 2020	Forecast Island Peak Demand		865 MW

- Notes: 8. Island Demand / LIL / ML Exports (where applicable) is supplied by NLH generation and purchases, plus generation owned and operated by Newfoundland Power and Corner Brook Pulp & Paper (Deer Lake Power, DLP).